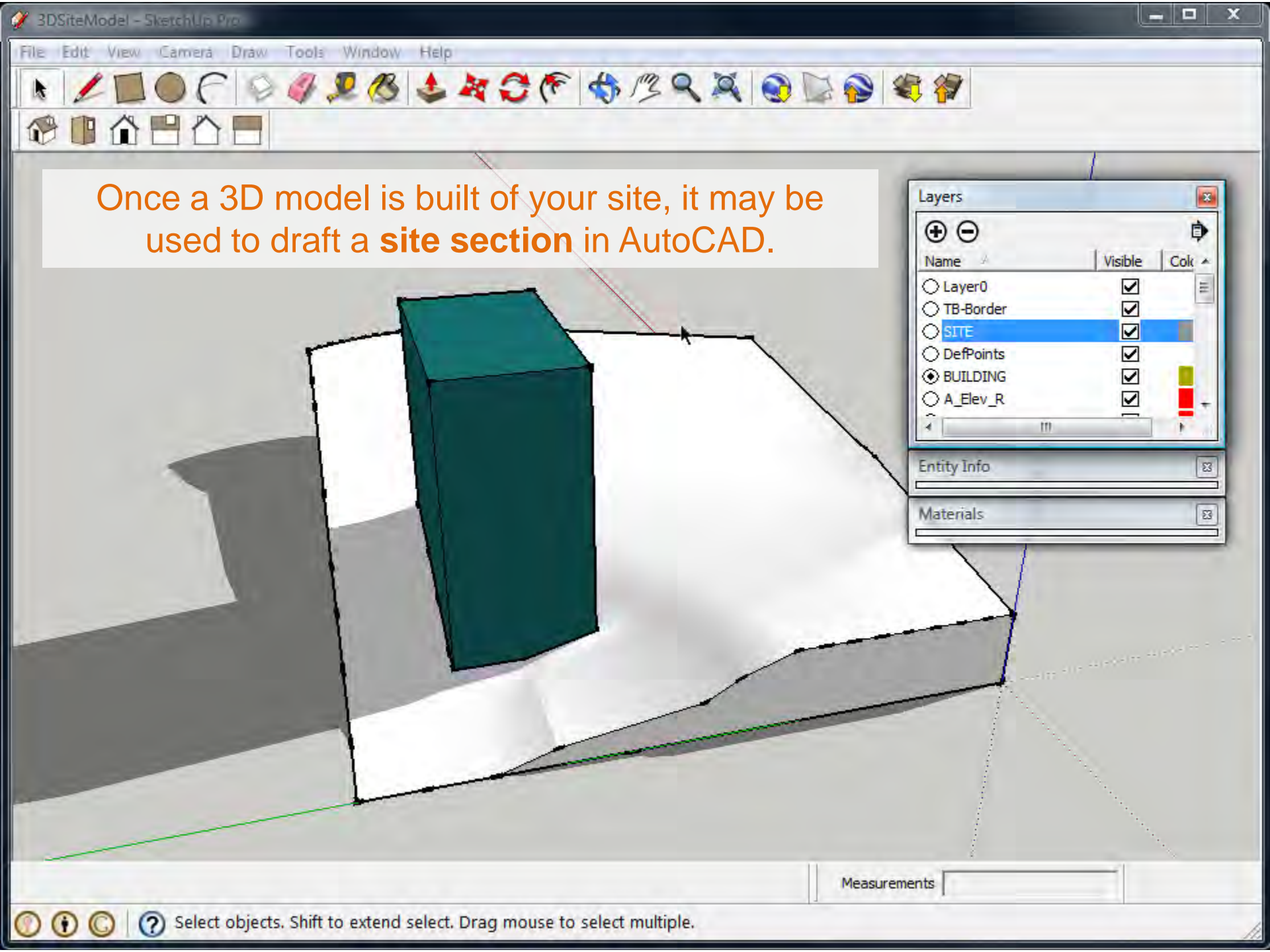


Arch 150

Week 8

**Using the Section Cut tool  
to generate a site section**



Once a 3D model is built of your site, it may be used to draft a **site section** in AutoCAD.

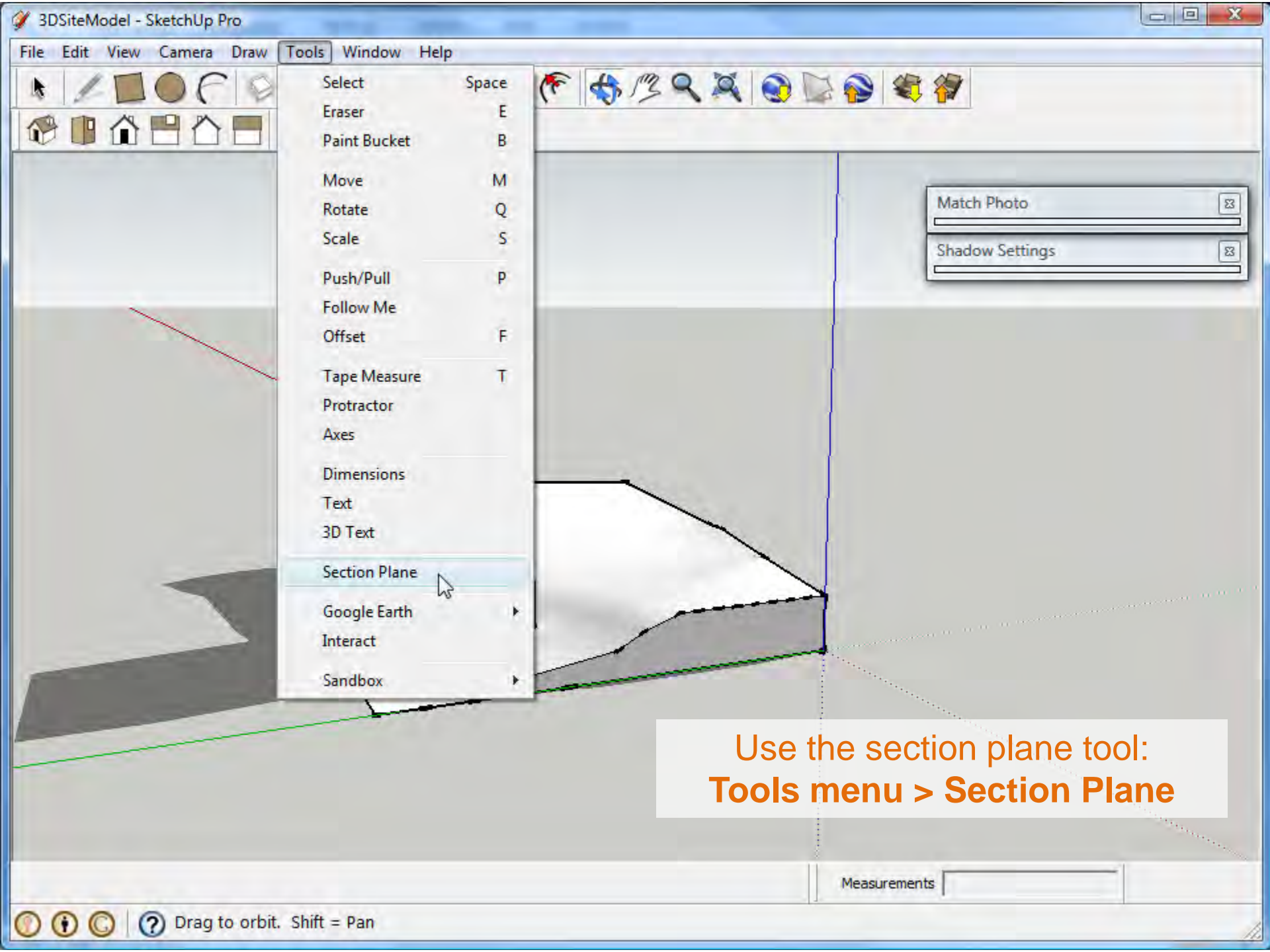
Layers

Name	Visible	Color
<input type="radio"/> Layer0	<input checked="" type="checkbox"/>	
<input type="radio"/> TB-Border	<input checked="" type="checkbox"/>	
<input type="radio"/> SITE	<input checked="" type="checkbox"/>	
<input type="radio"/> DefPoints	<input checked="" type="checkbox"/>	
<input checked="" type="radio"/> BUILDING	<input checked="" type="checkbox"/>	
<input type="radio"/> A_Elev_R	<input checked="" type="checkbox"/>	

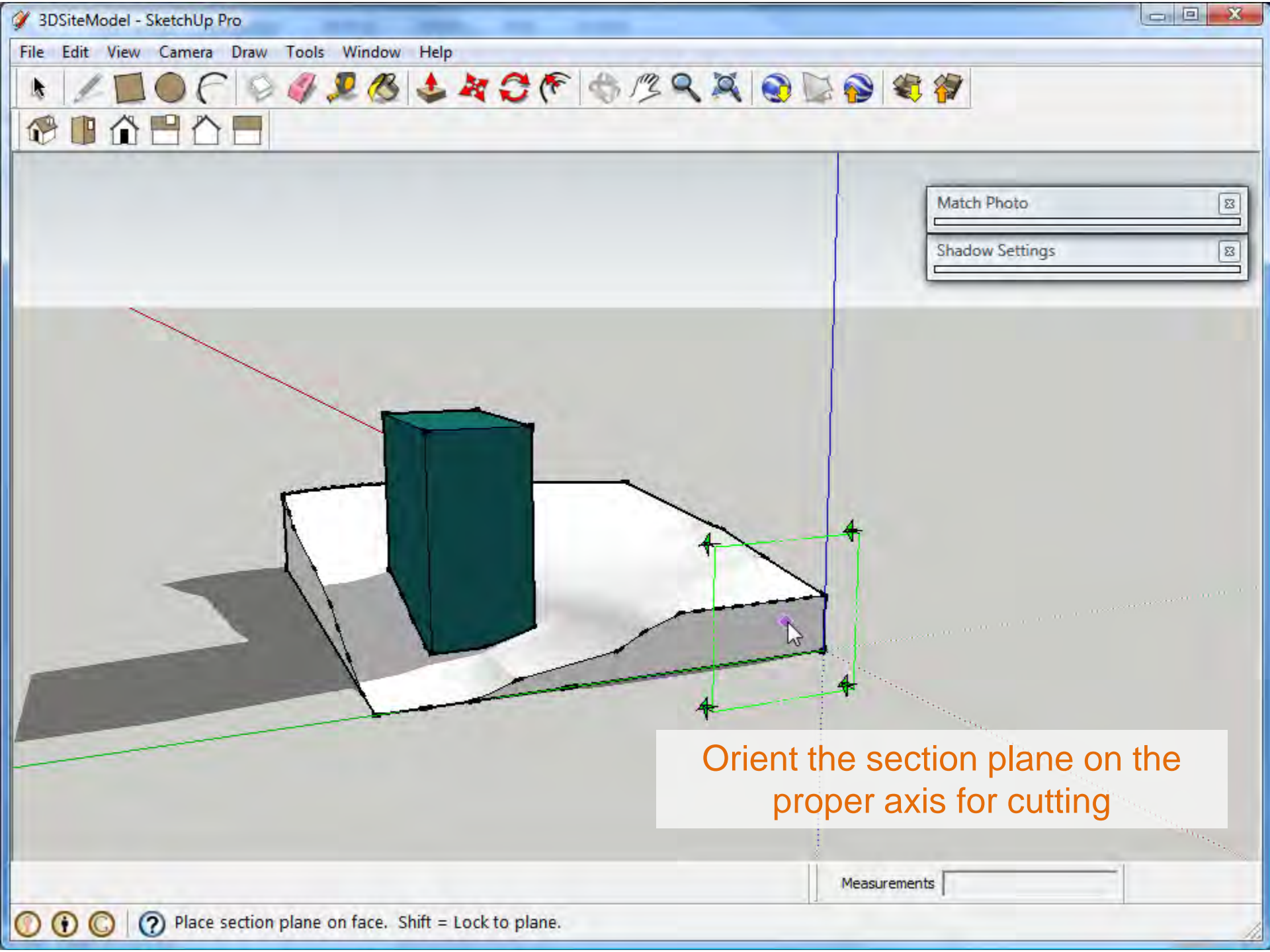
Entity Info

Materials

Measurements



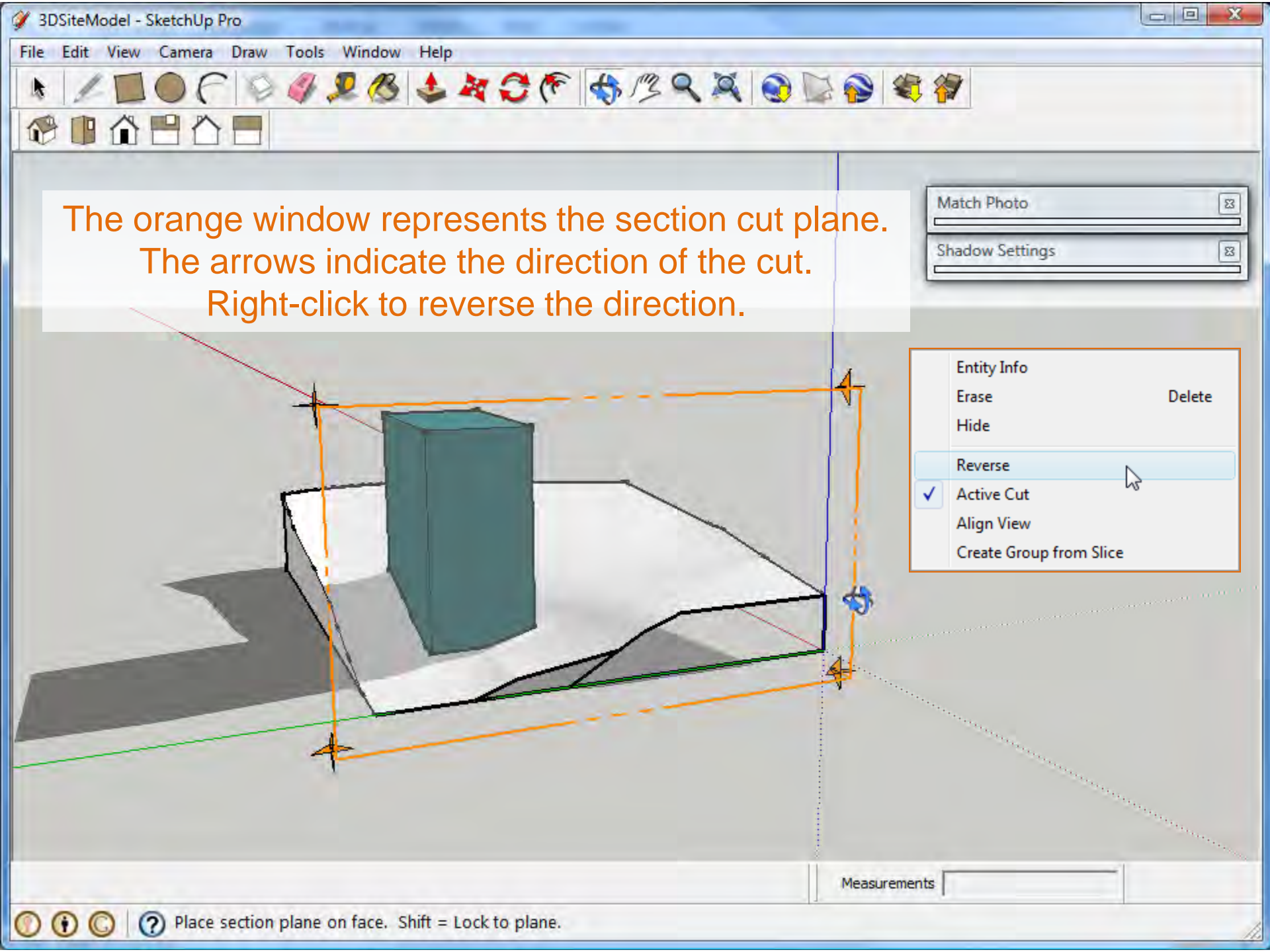
Use the section plane tool:  
**Tools menu > Section Plane**



Match Photo

Shadow Settings

Orient the section plane on the proper axis for cutting



The orange window represents the section cut plane.  
The arrows indicate the direction of the cut.  
Right-click to reverse the direction.

Match Photo

Shadow Settings

Entity Info

Erase Delete

Hide

Reverse

Active Cut

Align View

Create Group from Slice

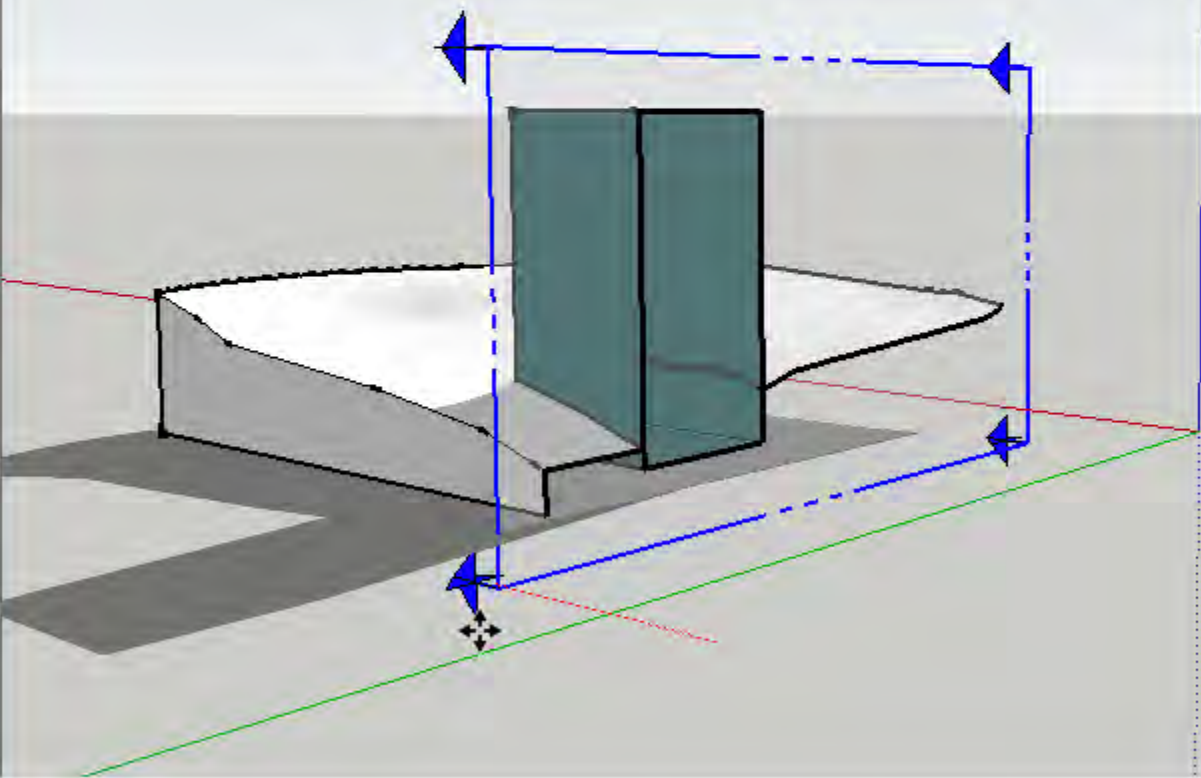
Measurements



Use the **move** tool to change the location of the cutting plane.

Match Photo

Shadow Settings



Length ~ 23' 11 5/8"

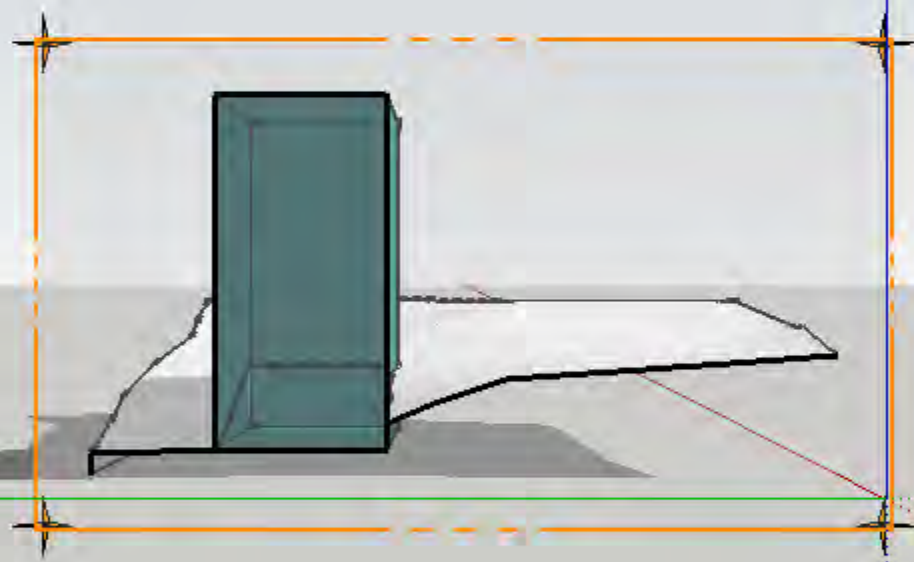


Left

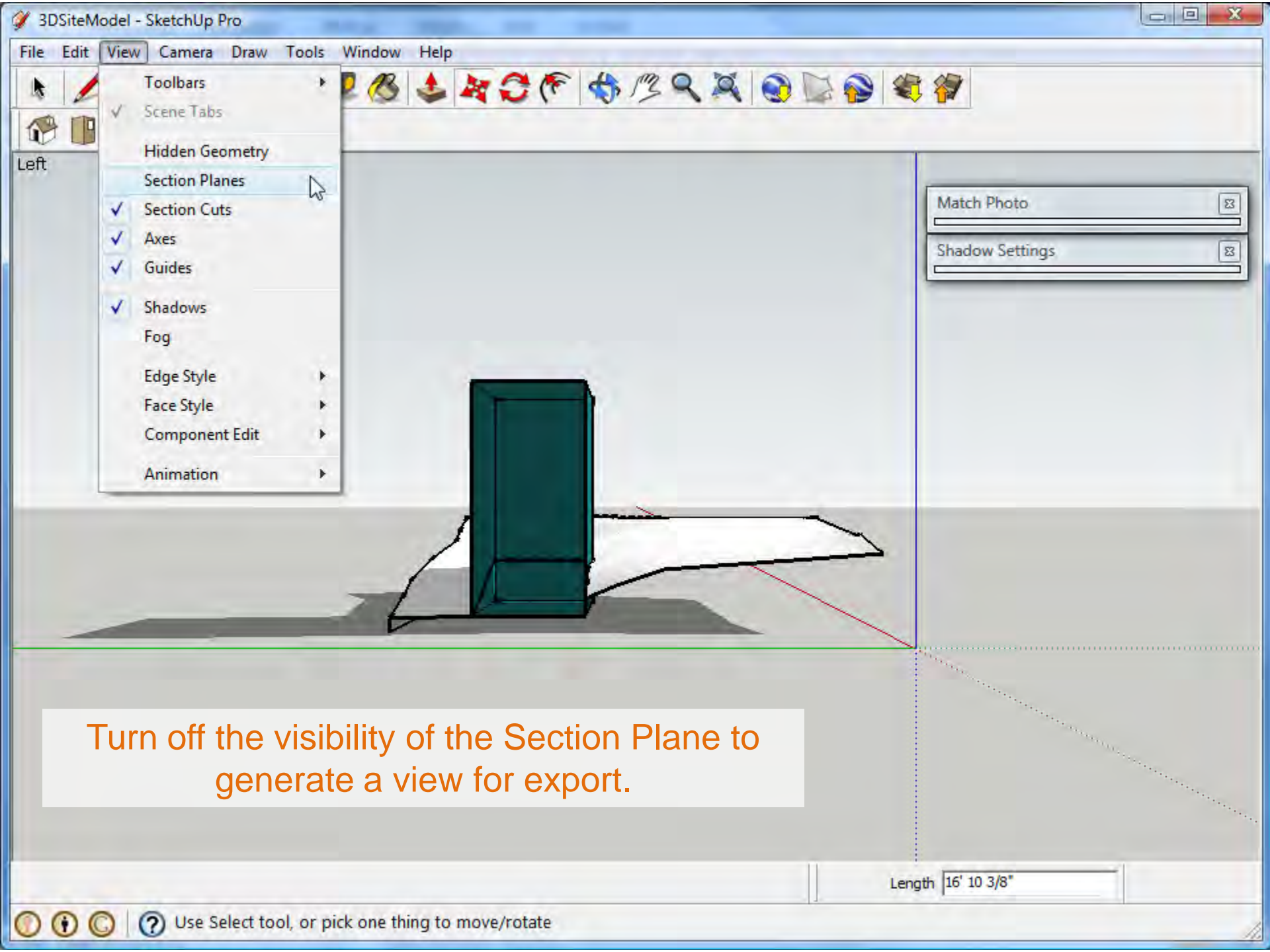
Use the **standard views** to review your work.

Match Photo

Shadow Settings



Length 16' 10 3/8"

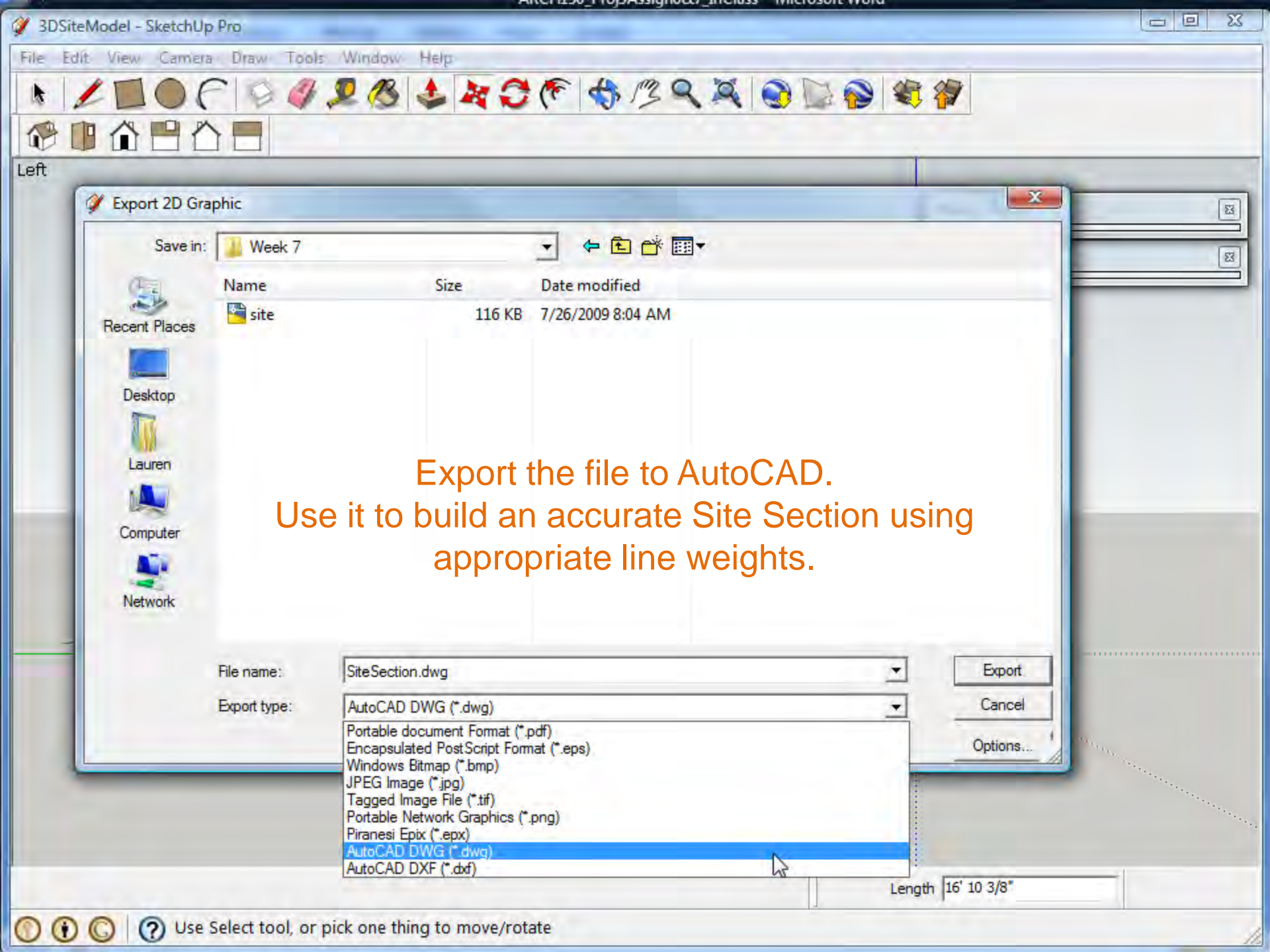


Turn off the visibility of the Section Plane to generate a view for export.

Length 16' 10 3/8"

Use Select tool, or pick one thing to move/rotate





Export the file to AutoCAD.  
Use it to build an accurate Site Section using  
appropriate line weights.

File name:

SiteSection.dwg

Export

Export type:

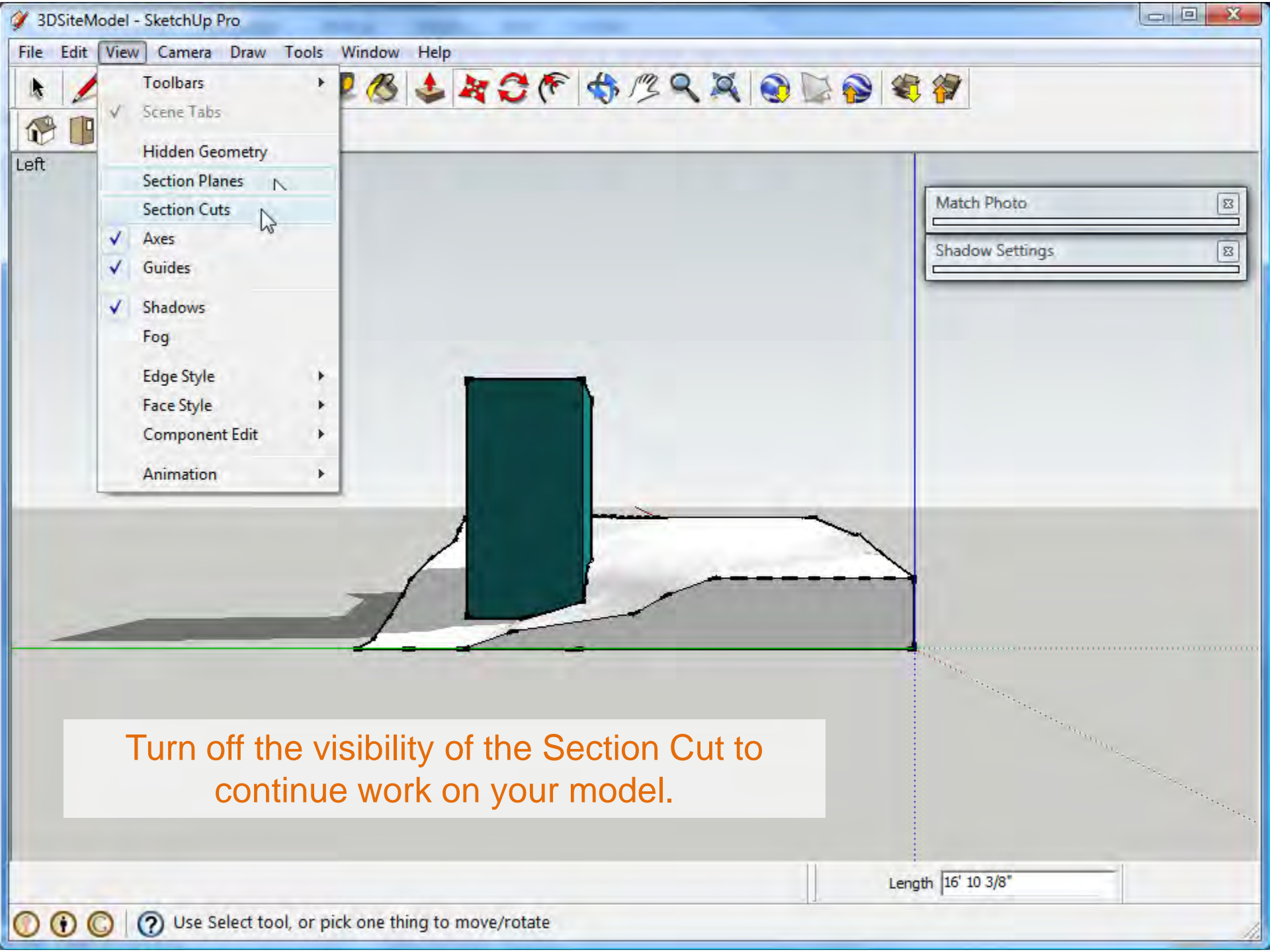
AutoCAD DWG (\*.dwg)

Cancel

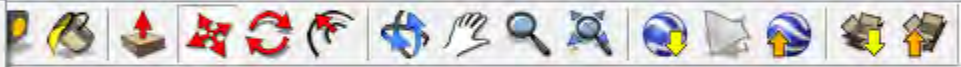
- Portable document Format (\*.pdf)
- Encapsulated PostScript Format (\*.eps)
- Windows Bitmap (\*.bmp)
- JPEG Image (\*.jpg)
- Tagged Image File (\*.tif)
- Portable Network Graphics (\*.png)
- Piranesi Epix (\*.epx)
- AutoCAD DWG (\*.dwg)
- AutoCAD DXF (\*.dxf)

Options...

Length 16' 10 3/8"



- Toolbars
- ✓ Scene Tabs
- Hidden Geometry
- Section Planes
- Section Cuts
- ✓ Axes
- ✓ Guides
- ✓ Shadows
- Fog
- Edge Style
- Face Style
- Component Edit
- Animation



Match Photo

Shadow Settings

Turn off the visibility of the Section Cut to continue work on your model.

Length 16' 10 3/8"

Use photographic imagery and textures to augment your site section.



Make adjustments to the section in Photoshop:  
add scale figures, images of plantings and  
photographs of building context.



Edit the ground plane to be graphically in keeping with the rest of your presentation.

