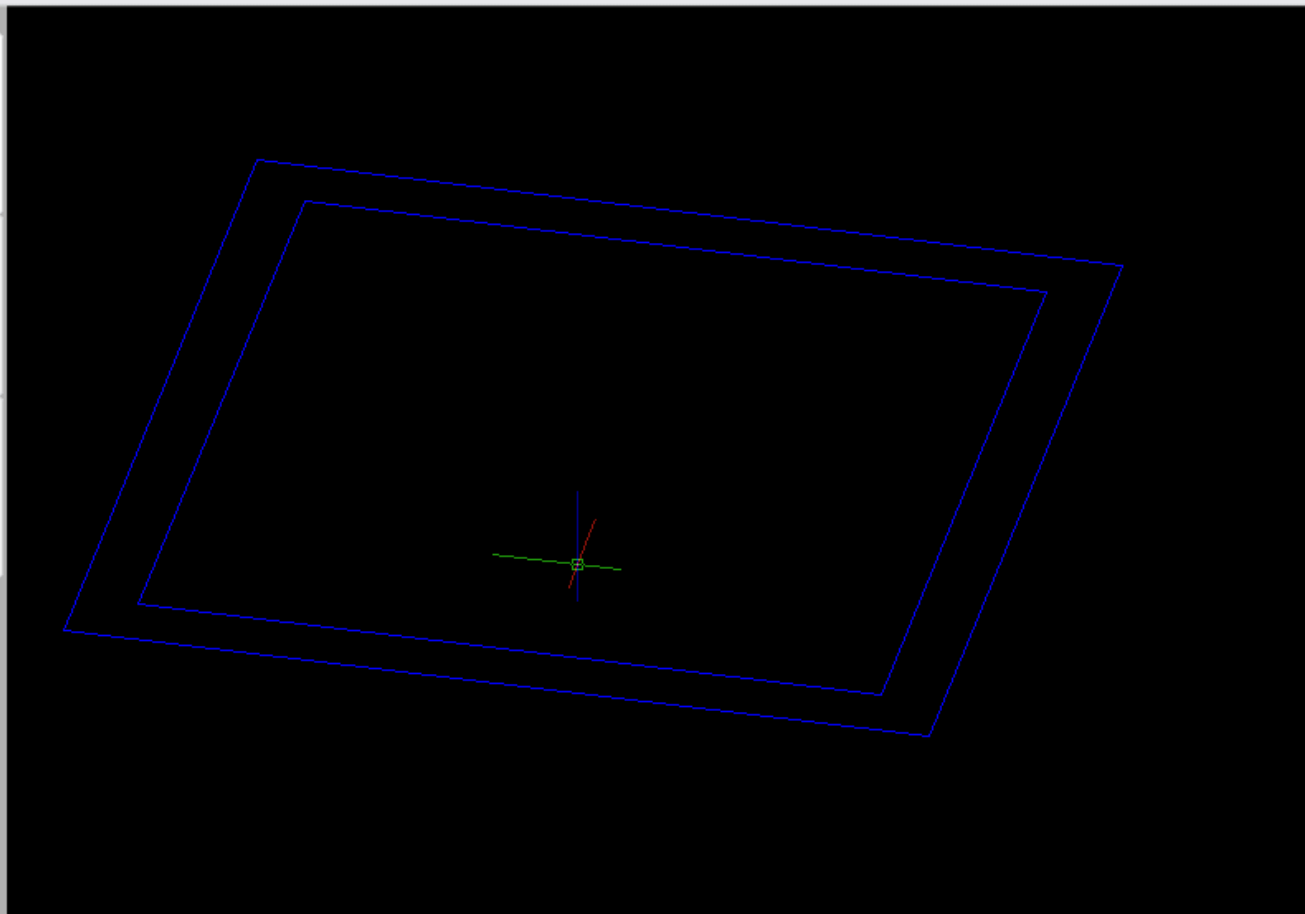


# How to build wire mesh in AutoCAD

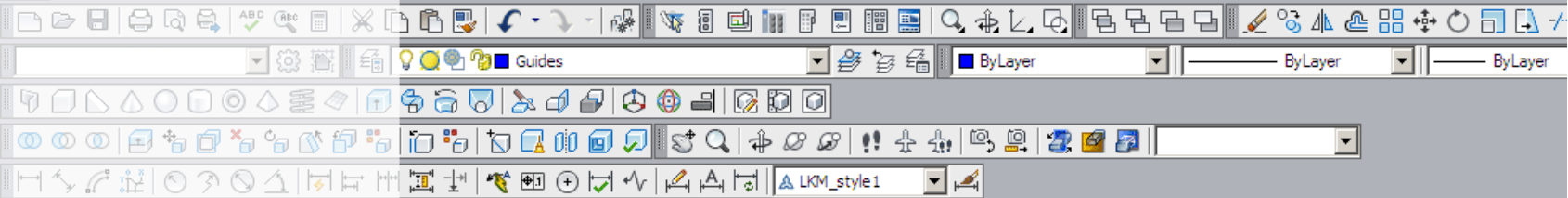
(Commands are indicated in CAPITAL LETTERS)

Draw a  
RECTangle  
representing one  
square of the wire  
mesh.

Offset the rect-  
angle a dimension  
representing 1/2  
the thickness of  
the metal of the  
wire mesh.



Command: \*Cancel\*  
Command: Specify opposite corner:  
Command: \*Cancel\*  
Command: \*Cancel\*  
Command:



No selection

**General**

Color	ByLayer
Layer	Guides
Linetype	ByLayer
Linetype scale	1.00000
Lineweight	ByLayer

**3D Visualization**

Shading	ByLayer
Shadow display	Casts and Rec...

**View**

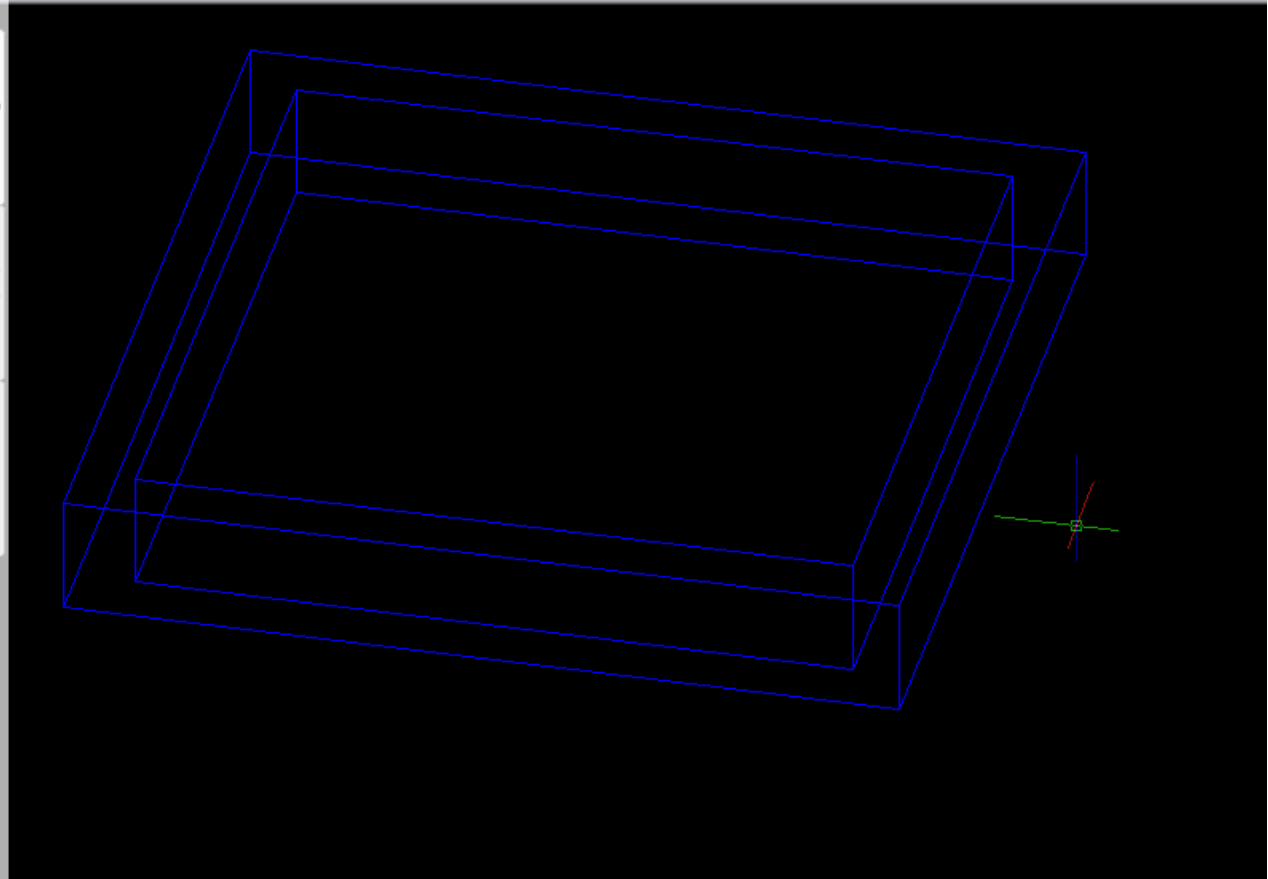
Center X	-220'-7 7/32"
Center Y	10'-3"
Height	7 5/32"
Width	7 29/32"

**Misc**

Annotation scale	1/8" = 1'-0"
UCS icon On	Yes
UCS icon at origin	No

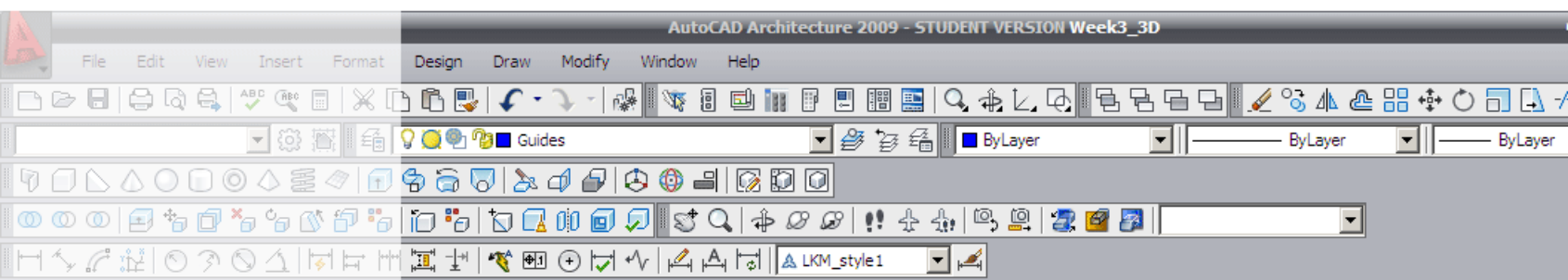
Properties

**EXTRUDE** both rectangles a dimension equal to the full thickness of the wire mesh.



Command: \*Cancel\*  
Command: \*Cancel\*  
Command: \*Cancel\*  
Command: \*Cancel\*  
Command:

-2.64781E+03, 1.28294E+03, 0'-0"



No selection

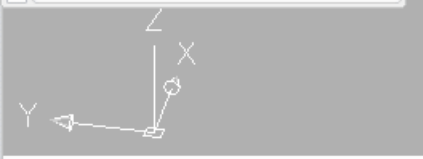
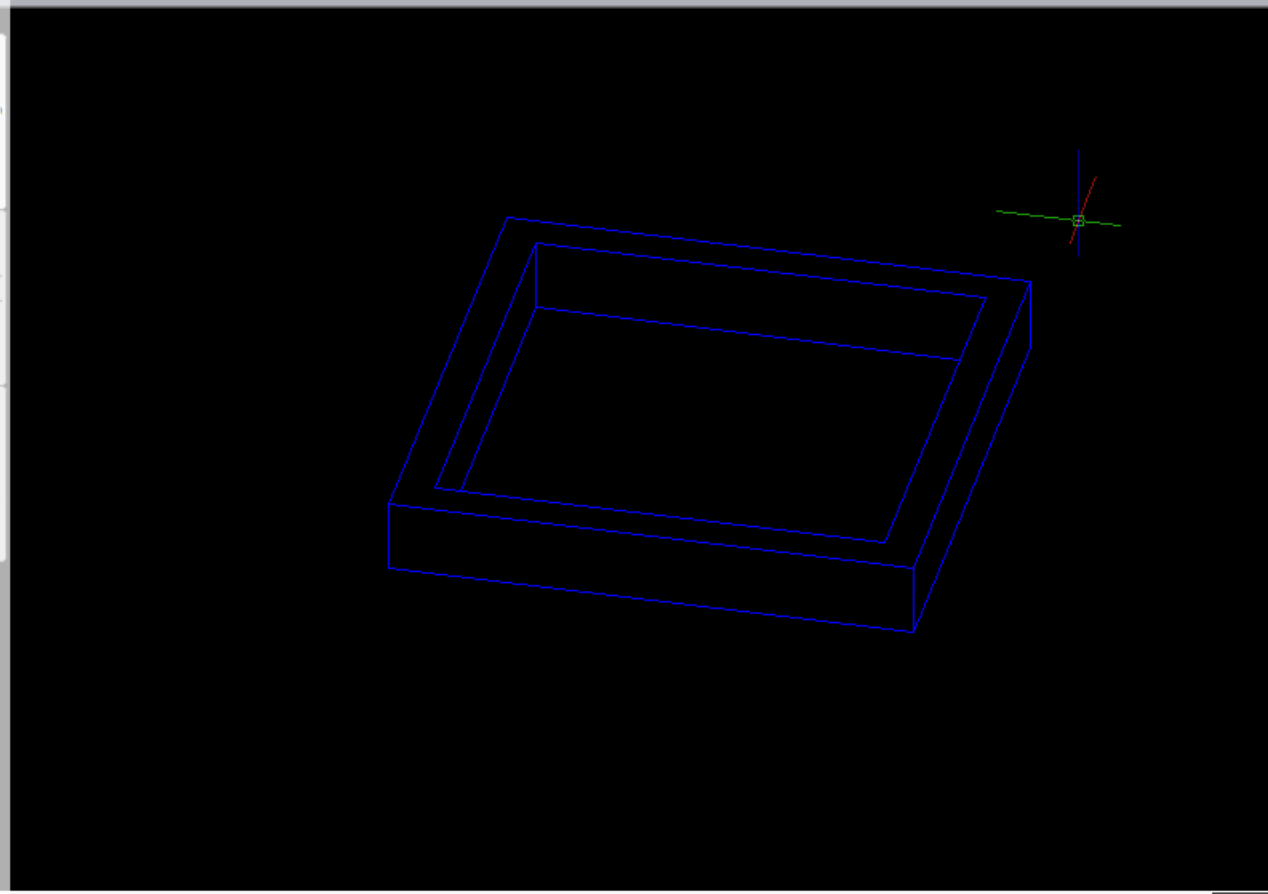
**General**

Color	ByLayer
Layer	Guides
Linetype	ByLayer
Linetype scale	1.00000
Lineweight	ByLayer
Thickness	1"
Material	ByLayer
Plot style	ByLayer
View	ByLayer

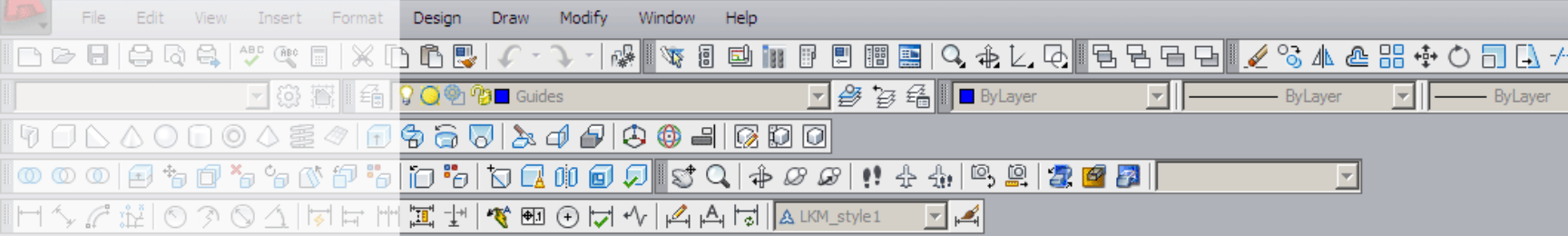
**Misc**

Annotation scale	1/8" = 1'-0"
UCS icon On	Yes
UCS icon at origin	No

**SUBTRACT** the inner extruded rectangle from the outer.



Select solids and regions to subtract ..  
 Select objects: 1 found  
 Select objects:  
 Command: hide Regenerating model.  
 Command:



No selection

**General**

Color	ByLayer
Layer	Guides
Linetype	ByLayer
Linetype scale	1.00000
Lineweight	ByLayer

**3D Visualization**

Shadow display	Casts and Rec...
----------------	------------------

**Misc**

Annotation scale	1/8" = 1'-0"
UCS icon On	Yes
UCS icon at origin	No

Use the ARRAY tool to create multiple duplicates of the new solid.

**Array**

Rectangular Array     Polar Array

Rows: 5    Columns: 5

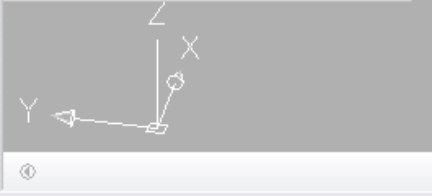
Offset distance and direction

Row offset: 7"    Column offset: 7"    Angle of array: 0.00

**Tip**  
By default, if the row offset is negative, rows are added downward. If the column offset is negative, columns are added to the left.

Select objects  
1 objects selected

OK  
Cancel  
Preview <  
Help



Command: \*Cancel\*

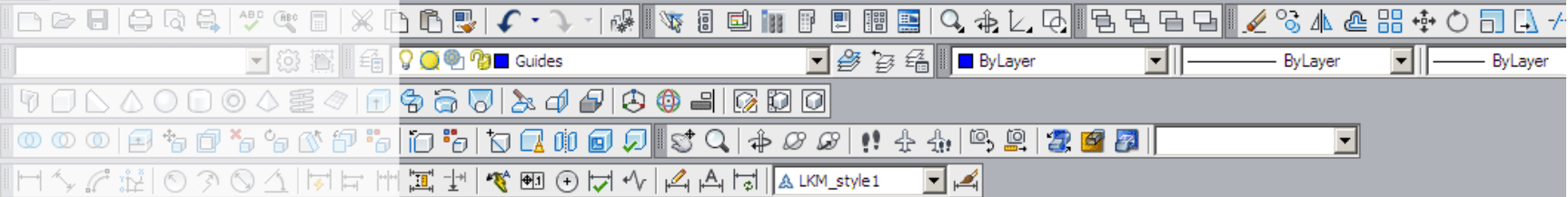
Command: array

Select objects: Specify opposite corner: 1 found

Select objects:

File Edit View Insert Format

Design Draw Modify Window Help



No selection

**General**

Color	ByLayer
Layer	Guides
Linetype	ByLayer
Linetype scale	1.00000
Lineweight	ByLayer

**3D Visualization**

3D visualization	ByLayer
Shadow display	Cast and Rec...
Plot style	

**Misc**

Annotation scale	1/8" = 1'-0"
UCS icon On	Yes
UCS icon at origin	No

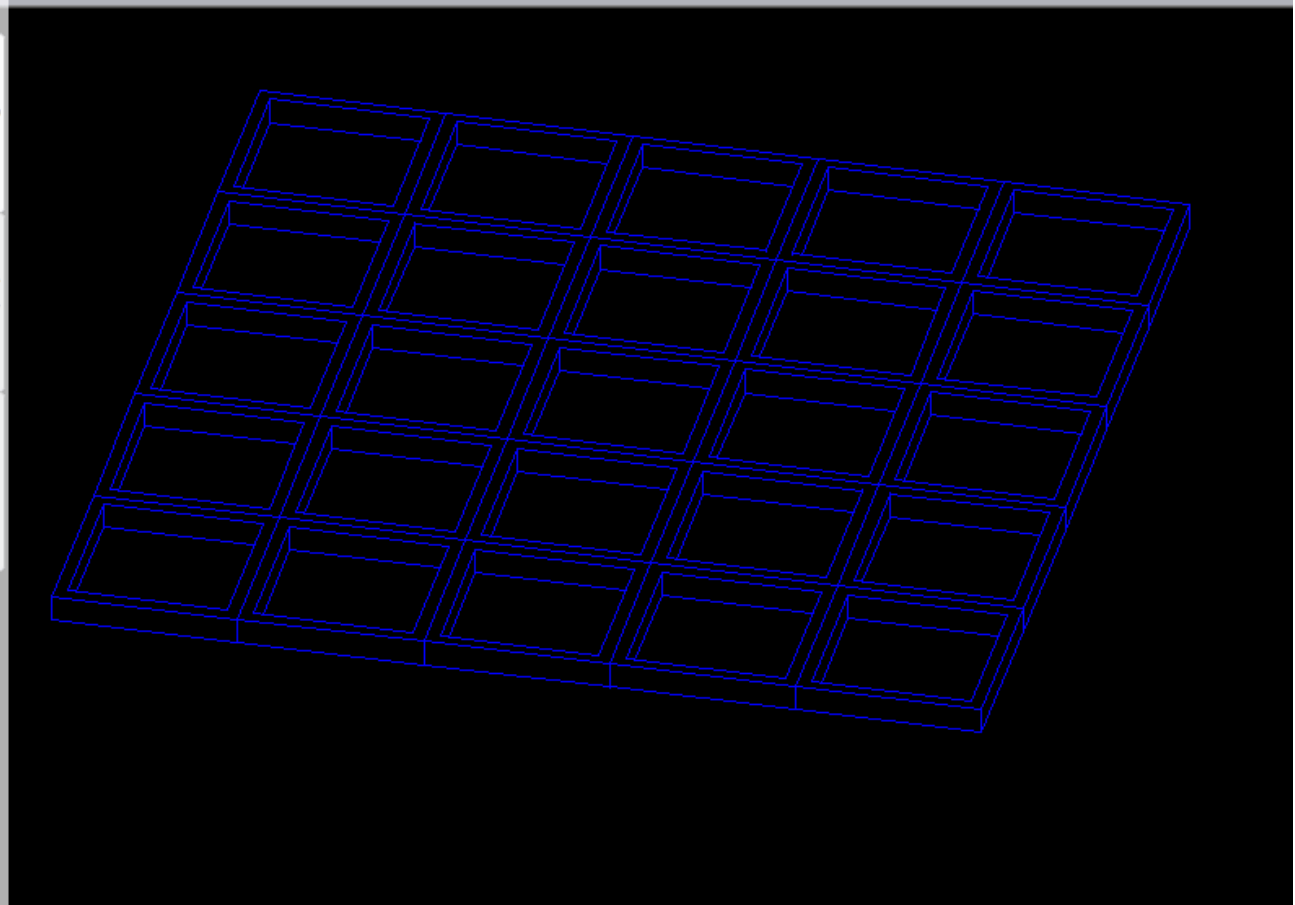
Properties

Design

Display

Extended Data

REgenerate your model as prompted in the command line to properly view the assembly.



Command: re REGEN Regenerating model.

Command: hide Regenerating model.

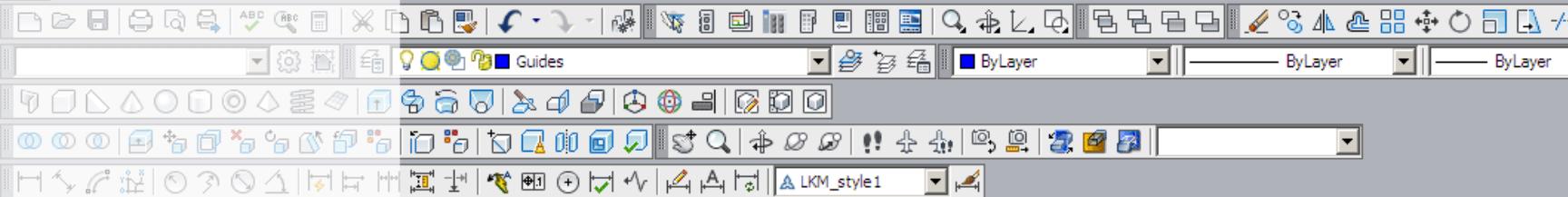
Command:

-219'-0 3/8", 105'-10 3/4", 0'-0"



1/8

File Edit View Insert Format Design Draw Modify Window Help



No selection

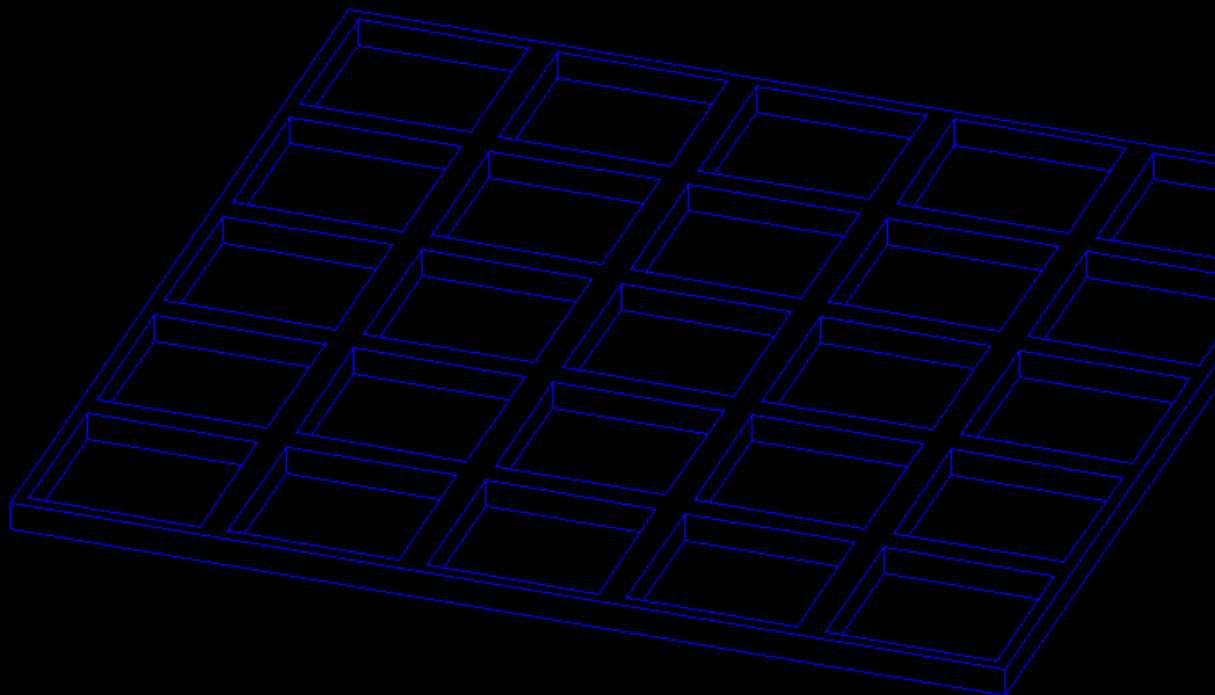
## General

Color	ByLayer
Layer	Guides
Linetype	ByLayer
Linetype scale	1.00000
Lineweight	ByLayer
Plot style	ByLayer
Shadow display	Control and Rec...
Plot style	
Center X	-219'-1 3/8"
Center Y	108'-6 27/32"
Center Z	0"
Height	2'-5 27/32"
Width	-3'-9 5/32"

## Misc

Annotation scale	1/8" = 1'-0"
UCS icon On	Yes
UCS icon at origin	No

Select all of the individual elements and UNION them together.



1/8

Command: '\_Sdorbit Press ESC or ENTER to exit, or right-click to display shortcut-menu.  
 Regenerating model.  
 Command: hide Regenerating model.  
 Command:

-2.64094E+03, 106'-3 3/8", 0'-0"