

Course Number and Title: ARCH 150 / Intro to CADD I / 4.0 Credits

Instructor: Lauren Karwoski Magee

Contact: LKM@DREXEL.EDU

Website: www.thedraftedline.com/teaching

PROJECT 2: Composite Drawing and Analysis – Composite Drawing with AutoCAD and Photoshop

It is often necessary to work between drawings and software to generate presentation-quality drawings.

Line work in AutoCAD alone may be appropriate for construction documents, but more developed representations of our ideas are necessary to convey a broader sense of design intent. Over the next two weeks, we will focus on developing composite-type drawings that reveal intent in a critical manner.

Assignment 4:

1. Check the course website for tutorials presented in class.
2. Export the 24"x36" layout from AutoCAD as a PDF at high resolution. Open this PDF in Photoshop to complete this week's assignment.
3. Using digital imagery taken of the context in, around and outside of studio, create a final composite drawing that is a hybrid of *line drawing* and *photographic context*.
 - a. Imagery must be used in *transparent* layers – only muted colors are acceptable.
 - b. Balance the imagery with the drafted linework – do not fill the page with images!
 - c. Achieve a balance of pure white drafted areas in with areas that include imagery.
 - d. Incorporate *some (but not all)* of the following: view through glass; color/texture of brick; desktop color / texture; color / texture of floor; view of background context in section.
4. This drawing will be created as a Photoshop document with several layers. Be certain to *flatten the image file prior to plotting* and save it as both a JPG (for your portfolio / website) and as a PDF.
5. You may *only* plot from a PDF! You must complete a half-size test plot to test your colors / transparencies / legibility prior to completing a full-size final plot. See due dates for more info.

Assignment Objectives:

Explore hybrid drawing techniques in representation style; work between software to develop a fluid working methodology; use imagery to aid in concept development and design presentation.

Submission of Work, Project 2, Assignment 1:

Assignment 1 progress due at 2pm, Tues 4/27/10 (Sect 1) or Thurs 4/29/10 (Sect 2)

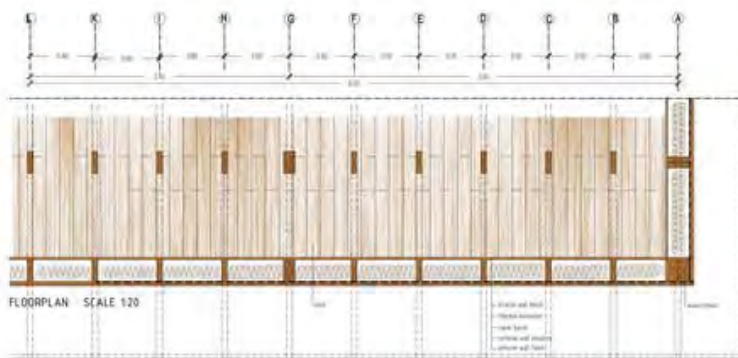
- One half-sized test plot (12"x18") with most composite imagery in place.

Assignment 1 final due on AW Storage at noon, Tues 5/4/10 (Sect 1) or Thurs 5/6/10 (Sect 2)

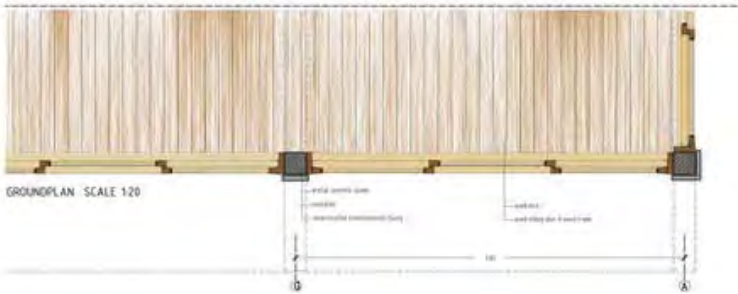
- Final full-sized drawing (24"x36") plotted to be pinned up.
- Submit digital files of the final document entitled **YourName_P2A1_Composite.jpg (300dpi)** and **YourName_P2A1_Composite.pdf**



FACADE SCALE 1:20



FLOORPLAN SCALE 1:20



GROUNDPLAN SCALE 1:20



L/SECTION SCALE 1:20



DIAGRAM OF FORCES